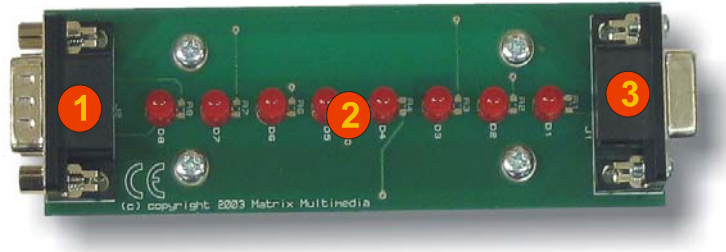


- E-blocks compatible
- Low cost
- 8 LEDs
- Upstream and downstream connectors



This simple LED panel contains 8 LEDs – one for each line on the E-blocks port.

This board contains both an ‘upstream’ E-blocks connector (for connection to the programmer) and a ‘downstream’ E-blocks connector which can be used to connect to other E-blocks, hence forming an 8 line bus.

- 1 E-blocks downstream connector
- 2 LEDs
- 3 E-blocks upstream connector